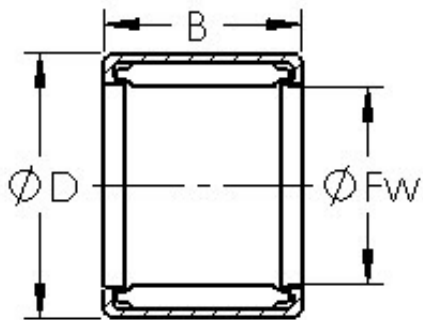




BEARING-THAILAND CO.,LTD.



AST S168 needle roller bearings

Bearing No. S168

Bore Diameter	25,4 mm
Outer Diameter	31,75 mm
Width	12,7 mm
Bearing Type	Full Complement, Mechanically Retained Rollers
Outer Dia (D)	1.2500
Width (B)	0.5000
Dynamic Load Rating (Cr)	3,600
Static Load Rating (Cor)	6,700
Max Speed (Grease) (X1000 RPM)	4,300
Shaft (Fw)	1.000
Weight (g)	20.00
Material - Drawn cup: Hardened carbon steel alloy, Rollers	52100 Chrome steel or equivalent

S168 Bearing 2D drawings and 3D CAD models